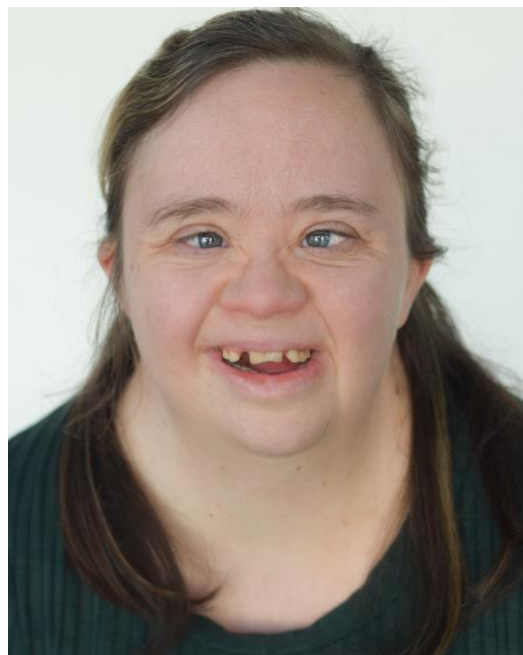


Ellen

Learning Disabled Performer

Sex: Female
Nationality: British
Acting Age: 18-34
Hair: Dark blond
Eyes: Blue
Height: 5'0"
Contact: hannah@stratford-circus.com



Personal Statement

Ellen is an outgoing and friendly individual with excellent training, communication, presentation and interpersonal skills. Her positive and professional attitude makes her an excellent team worker and leader alike and she has excelled as lead artist at Blue Sky Actors for over five years.

With many years of performance experience, Ellen is a confident and engaging actor and singer. This year, she continued to develop her skills with her directing debut of *Princess of the Graveyard Palace*, an original production co-written by Ellen and her father. She is looking forward to continuing to using her passion for performance and disability rights to make engaging and creative theatre.

More info: <http://www.ellengoodey.co.uk>

Education and Training

Year	School/ Company	Course
2016	Face Front Inclusive Theatre & SCAC	Training Emerging Actors Masterclass
2014 - 2015	The Royal Central School of Speech & Drama and Access All Areas	Performance Making Diploma

Professional Theatre

Year	Character	Production	Company	Venue
2019	Melody	<i>It's My Move</i>	Face Front	Tour
2018	Melody	<i>It's My Move</i>	Face Front	London Tour
2018	Melody	<i>It's My Life</i>	Face Front	National Tour
2018	Patient 360	<i>Mad House</i>	Access All Areas	Shoreditch Town Hall
2017	Melody	<i>It's My Move</i>	Face Front	National Tour
2017	Director	<i>Princess of the Graveyard Palace</i>	Partnership	Stratford Circus
2010	Zoe	<i>Laundry Boy</i>	Face Front Theatre	National Tour
2009	In Control Fairy	<i>In Control</i>	Face Front Theatre	National Tour

Community Theatre

Year	Character	Production	Company	Venue
2019	Triple Threat	<i>Pantocchio</i>	Blue Sky Actors	Stratford Circus
2019	Dancer	<i>Corali Dance</i>	Corali	Oval House
2019	Ensemble	<i>Charlie & the Awkward Factory</i>	BSA	Stratford Circus
2018	Ensemble	<i>Choir Concert</i>	Sing For Joy	
2018	Ensemble	<i>Alice in Winterland</i>	Blue Sky Actors	Stratford Circus
2018	Stacey/Tourist	<i>The Unusual Suspects</i>	Blue Sky Actors	Stratford Circus
2017	Blixen/Sprout/Elf	<i>The Jingle Book</i>	Blue Sky Actors	Stratford Circus
2017	Ensemble	<i>Sevenish</i>	Blue Sky Actors	Stratford Circus
2016	Teddy	<i>Peter Panto</i>	Blue Sky Actors	Stratford Circus
2016	Ensemble	<i>Dance Performance</i>	TBC	Tate Gallery
2016	Ensemble	<i>A2B</i>	Blue Sky Actors	Stratford Circus
2016	Ensemble	<i>H.M. Home</i>	Blue Sky Actors	Stratford Circus
2015	Good Fairy	<i>The Wizard of Us</i>	Blue Sky Actors	Stratford Circus
2015	Ensemble	<i>3 Minutes</i>	Blue Sky Actors	Stratford Circus
2015	Ensemble	<i>H.M. Home (R&D)</i>	Blue Sky Actors	Stratford Circus
2015	Pig	<i>Three Pigs</i>	Blue Sky Actors	Stratford Circus
2014	Ensemble	<i>The Hunchback</i>	Blue Sky Actors	Stratford Circus
		<i>Dame of Notre Newham</i>		
2014	Barbie	<i>No Barriers With Barriers Bowling Club</i>	Ramira Arts Collective	Stratford Circus
2014	Ensemble	<i>Wedding Crashers</i>	Blue Sky Actors	Stratford Circus
2014	Ensemble	<i>Frank and The</i>	Blue Sky Actors	Stratford Circus
2013	Ensemble	<i>Sleeping Jack Whittington</i>	Blue Sky Actors	Stratford Circus

Film & Television

Year	Character	Film	Company
2020	Ghost	eBLUenezer Scrooge	Blue Sky Actors
2019	Melody	It's My Choice	Face Front Inclusive Theatre
2018	Producer	Em & Jay	Mencap & Blue Sky Actors
2011	Self	<i>Care Power</i>	Joseph Rowntree Foundation
2011	Board Member	<i>Proctor & Gamble/Smuggler Productions</i>	The Cooperative
2010	Vicky	<i>A Life Better Spent</i>	Flexible Films
2011	Self	<i>Living the In Control Life</i>	The Cabinet Office
2006	Self	<i>Only Human</i>	Channel 4

Radio

Year	Character	Play	Company	Venue
2020	Ensemble	<i>Radio Blu</i>	Blue Sky Actors	Stratford Circus Arts Centre

Performance Skills

Singing, poetry, public speaking, tap dance, Makaton, touring, devising, drama facilitation

References (on request)

Ray Downing

Artistic Director
Face Front Inclusive Theatre
ray@facefront.org

Annie Smol MBE

Associate Director
Face Front Inclusive Theatre
annie@facefront.org