



Celebrating 25 Years of Inclusion

FACE FRONT

1998-2023

Annual Report
2022 - 2023



Performers and staff of our newest community group - The Bridge Group

Aims and Objectives of Face Front

Face Front Inclusive Theatre creates original, ground-breaking Inclusive Theatre with a company of disabled, neurodiverse and diverse artists. The company produces professional, entertaining and challenging multi-layered theatre, through its Theatre in Schools, Participation and Training programmes.

Face Front aims to:

Use the arts to improve emotional well-being and address social injustice.

Develop productions that explore social issues, raise awareness and enable people to engage in the process of change.

Provide programmes that enable disadvantaged adults and children to participate in the arts.

Create pathways to employment in the arts for disabled people and those not traditionally involved in the arts.

Chair's Report



The highlight of this, our 25th year of delivering inclusive theatre, was the development of **The Hero Next Door**, our first public production for several years. The play, by our patron Onjali Raúf MBE, celebrates difference, friendship and working together to do the right thing, featuring an unlikely trio of young people who expose a con-woman to protect an elderly neighbour. As always at Face Front, the cast and creatives included disabled, neurodiverse and diverse artists.

Developing this new play was on top of our regular tours and eight community groups, resulting in an extremely busy and demanding year for our very small team. They deserve enormous credit for maintaining our high professional standards and achieving so much with very limited resources.

It's My Move, dealing with the transition of students from SEN schools into adult provision, toured in autumn 2022, and **Whisper Me Happy Ever After**, addressing domestic abuse for pupils in years 5 and 6, toured in spring 2023. We were delighted to be able to include five disabled actors from our Blue Sky Actors group in the cast of **It's My Move**. We also facilitated **CLICfest'22** (Connecting London's Inclusive Communities) which brought together 30 partners to exchange

and promote the work of disabled artists and community groups in London.

Covid continued to affect staff and participants and added costs as we needed extra understudies for tours. One positive outcome of the pandemic was the creation of digital versions of our main productions. This means we can now reach many more schools across the country than is possible with a physical tour. We premiered **Equilibrium**, the film of a show developed by our Broken Silence group, to a packed house at the Lea Valley Odeon in the summer.

At the beginning of the year, we finalised our application to the Arts Council for National Portfolio Organisation (NPO) status. This would have given us three years of guaranteed support, providing the basis for developing more secure income streams and broadening our impact. However, we were immensely disappointed not to succeed with what we believe was an extremely powerful application.

Nevertheless, we ended the year in a strong financial position, although the extensive work required for the NPO application interfered to some extent with our regular fundraising efforts. As a result, 2023 has been difficult financially, and we have cut our cloth accordingly. We are developing alternative income streams, and I am confident that Face Front is well positioned for the next 25 years.

Roger Cowe

Chair, Face Front Inclusive Theatre

- 2 Aims and Objectives
- 3 Chair's Report
- 4 Patrons
- 5 Financial Report
- 6 CEO Report
- 8 Green Screen and Studio Hire
- 9 Celebrating 25 years
- 10 Theatre in Schools
- 11 Digital Theatre in Schools
- 12 Theatre in the Community
- 14 Bespoke Projects & Festivals
- 16 Funders
- 17 The Future
- 18 Who are Face Front?
- 20 Contact Details & Social Media

giftaid it

Face Front is a registered charity and welcomes donations. If you are a taxpayer, for every pound you give under the Gift Aid scheme, the government will allow us to claim back 25p.

Please do not hesitate to contact us if you can help us in this way, and feel assured that you will be investing in a well-run company that really makes a difference.

Patrons



Josette Bushell-Mingo OBE

"Face Front are amazing. I am a proud patron to a company that creates ambitious, inclusive practice, diverse arts and culture, as well as celebrating community. The breadth of work and the impact by such a small company, across education, inclusion and belonging, training and theatre, is quite simply

astounding. A company to follow and support."



Joseph Adelakun

"I'm super excited to become Face Front's newest patron! Being an actor myself, I know the power of what theatre can do, especially when it tackles important topics and is representative of its audience and community - as Face Front so expertly does. Having seen first-hand just how valuable, inclusive and fun their work is,

and having already worked with some of the Face Front family in the past, I'm really looking forward to being a greater part of this amazing company as a Patron!"



Rachel Denning

"I was first introduced to Face Front when I worked on Sex FM as an actor and facilitator. I saw how their work can change and sometimes even save lives. I feel that Face Front simply opens its eyes to people (actors and audiences) who are traditionally excluded from the arts and makes them entirely included. Face

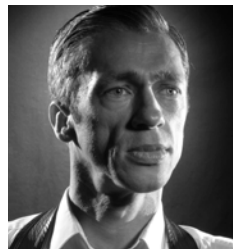
Front continues to reach out to young people in the community and further - impacting lives with sensitivity, honesty and fun. I am proud to be their patron and to help spread their work."



Doris Jiagge

A resident of Edmonton for 28 years, she knows the area and its communities well. Her focus on domestic violence and its impact on children aligns with the work Face Front does with our touring show Whisper Me Happy Ever After. She is proud of her association with Face Front and our partnerships with local schools

and outreach work.



Mat Fraser

"Theatre has the power to transform the lives of people who make and watch stories unfold on stage. It can radically alter their real lives for the better. When you put those tools in the hands of children who've experienced domestic violence, it can be overwhelmingly powerful and lead to them beating the

oppression that keeps them down and finally succeeding in real life. Face Front do this work with passion and have the experience to help these young people help themselves."



Onjali Raúf MBE

"I joined Face Front's wonderful board group after seeing for myself the impact that their anti-domestic violence play Whisper Me Happy Ever After had upon the children and teachers it was being performed to. It was an honour to serve in my own small way and try to contribute to what I regard as an amazing group's desire

to establish not only a diverse and fully accessible arts platform in every way, but to tackle subject matters which few other arts initiatives dare to take on."



Aditya Chakraborty

Aditya grew up in Enfield and is a columnist and senior economics commentator at the Guardian newspaper.

"I am delighted to be part of this distinguished group of Face Front patrons and look forward to helping this exciting theatre company to continue developing its innovative brand of inclusive theatre."



Judy Hepburn

"When I think of Face Front Inclusive Theatre I see people from all walks of life, ages and abilities, exploring how best to entertain, inform and empower those that participate and those that watch its shows. It is led by a small, dedicated team that produces work huge in ambition and content. We are all richer having Face

Front in our community and beyond. I am honoured to be a patron. Long may its work continue."

Chairman's Comments on Face Front Financial Statements 2022-23

The chart (right) shows that the past two years have disrupted our record of small surpluses or deficits from year to year, which has been our successful financial strategy for several years. This is an unfortunate distortion caused by a change in accounting treatment we were required to introduce in 2021/2.

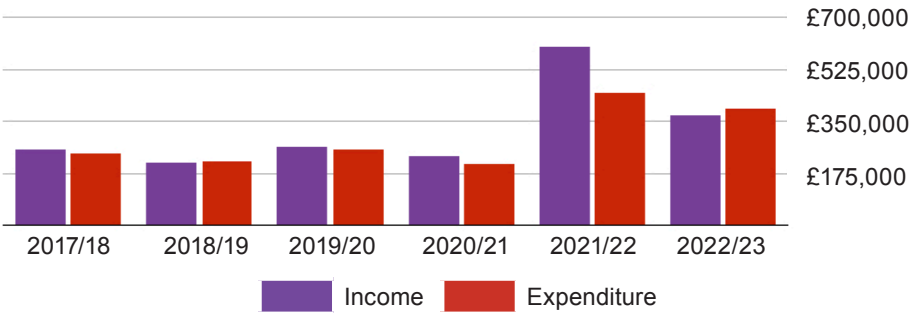
Changing the treatment of grants received resulted in excessive income in 2021/2 and a large surplus. That surplus has now reversed, leaving us reporting a significant deficit this year. We aim to resume our normal trend in 2023/4.

We run a very lean organisation and keep tight control of costs to match our income. The pie charts show that the vast majority of spending is directly for performances and workshops, the studio and our small team who make everything happen.

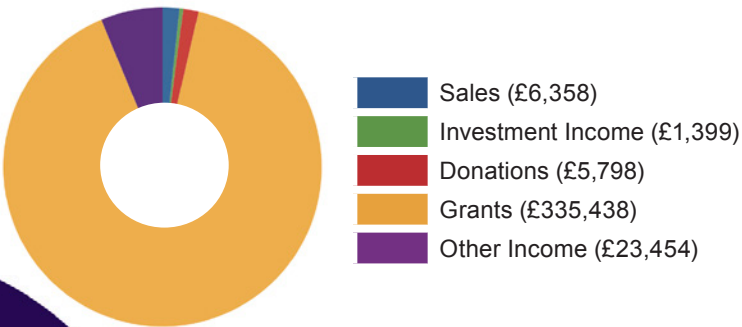
Dedicated fundraising activity and tight financial management mean we have maintained a solid financial position despite the difficult economic conditions everybody has experienced. I am confident this will continue.

Roger Cowe
Chairman

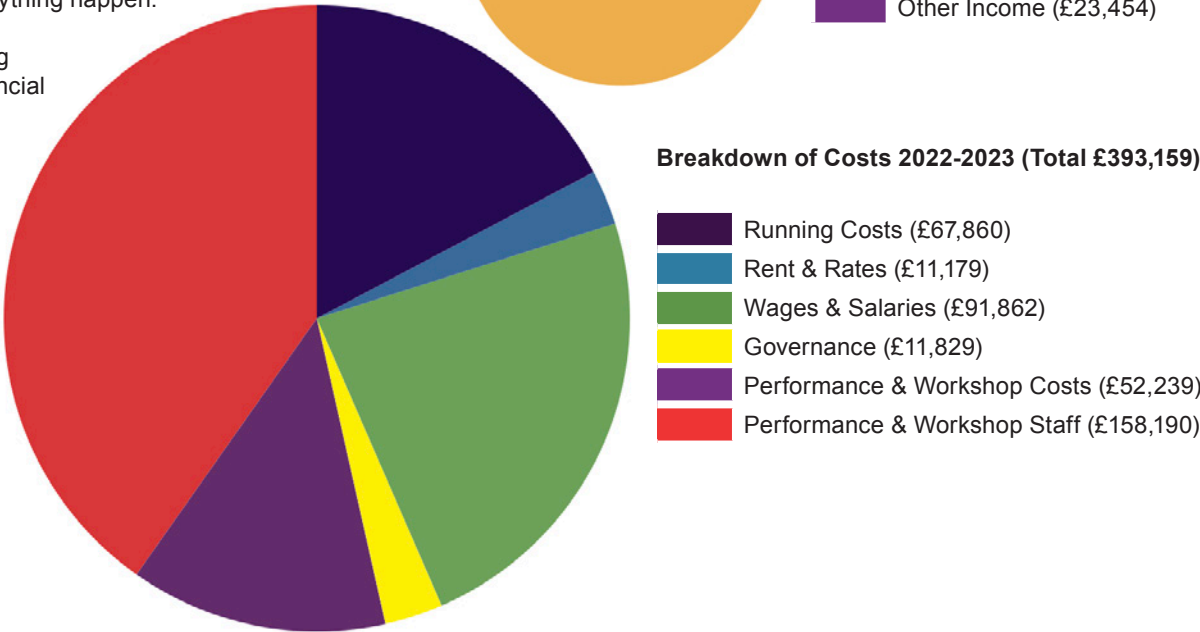
Income and Expenditure 2017-2023



Breakdown of Income 2022-2023 (Total £372,447)



Breakdown of Costs 2022-2023 (Total £393,159)



CEO Report



We want to start by saying happy 25th anniversary to every Face Front participant, colleague, volunteer and audience member, both past and present. Face Front's journey over a quarter of a century has been incredible – we're thrilled to see what the next 25 years will hold!

Across 2022-23, we continued to emerge from the shadows of the pandemic, and move all our community groups and productions back into in-person delivery.

Over the hot summer, InterACTION recorded an album of songs and filmed a feature-length film called **Mr and Mystery**, both on location in Ponders End, and at our very own green screen studio. The film premiered at our associate theatre, Dugdale Arts Centre, and has since been viewed 700+ times on YouTube.

Our impressive youth group DDM launched their solo short films, performed **Wait... What?** and started their Arts Awards.

Broken Silence's **Equilibrium** premiered at the ODEON Luxe Lee Valley to a sold-out audience – we're now entering the film for other festivals and look forward to an invite to the Oscars!

Face Front's eighth community group, The Bridge Group was launched, with local funding and social prescription referrals. This new group has been designed to introduce participants to Face Front for the first time. We've loved meeting new members, several of whom have since moved on to another of our community groups and are now a fully established part of Face Front's family.

We're delighted that Theatre Royal Stratford East supported the Blue Sky Actors to continue to work and play in the newly named Stratford Youth Zone. Highlights include **The Pant-u-h-O That Goes Wrong** and **Untold Stories**.

Moving on to our tours, the year started with another successful tour of **Whisper Me Happy Ever After** across five London boroughs and ended with an equally successful tour of our flagship production, **It's My Move**. We also continued to promote the digital versions. Since it's launch, **Whisper Me**

Digital has been seen by over 8000 children, while **It's My Choice** has been used by SEN schools nationally.

Our brand new production, **The Hero Next Door**, written by our award-winning patron, Onjali Raúf MBE, moved into an R&D phase with an international tour planned.

In other projects, we partnered with Haringey Creates to lead a dynamic training session for teachers and practitioners called **Diversifying the Curriculum**. Meanwhile, **CLICfest'22** – an online festival bringing together the best events, activities and performances from London's community theatre groups – was a huge success.

Finally, Face Front is nothing without the support our funders, partners, patrons, trustees and volunteers. In these tumultuous times, we're so grateful to have you with us as we all work together to lead the way in truly inclusive theatre.

- Jon French & Ray Downing
 Co-CEOs



Volunteer with us

Support ground-breaking
theatre that changes lives

Email: hello@facefront.org

Green Screen and Studio Hire at Face Front



Our Green Screen Cove offers creatives infinite image making possibilities

When Covid-19 restrictions brought our schools tours to a halt, we decided to take the plunge and install an infinity cove green screen. This incredible new resource is now being used across multiple Face Front projects and groups, and is also available for hire. It has one of the largest footprints of any green screen studio in North London.

Hire also includes:

- Fast wifi
- Air conditioning
- Black floor-to-ceiling curtain panels
- Sound system
- Access to our store of blocks, props and costumes
- Kitchen and toilet facilities
- Full disabled access

Technical specification

Size:

5.4m(w) x 4m(l) x 3.4m(h)

Lighting:

Six ceiling-mounted dimmable 'Anytronic's LED light panels that provide both warm and cool washes controlled by a Zero 88 Juggler DMX panel.

Three portable, floor-standing LED panel SWIT PL-E90D dimmable LED light panels.

Additional lights are also available on site.

Hire starts from £300 a day. For a complete price list and to discuss your requirements, contact: hello@facefront.org / call 020 8350 3461.

What previous users say about it:

"As a professional video producer of 25 years, it was exciting to discover the brand new green screen studio at Face Front in Edmonton Green... A very flexible creative space suitable for low-budget video productions through to multi-camera broadcast studio productions. At such affordable rates of hire, I would certainly recommend the Edmonton Green Screen studio at Face Front."

- Mark Ratcliff, Fellow Productions

"JaZanne Arts has used Face Front's Green Screen to make a film commissioned by AgeUK Enfield and the North Middlesex Hospital. We have found the staff to be extremely welcoming and nothing is too much trouble, they even constructed an extra studio area for our sound recording. The screen itself is large and seamless including both walls and floor with bespoke lighting so our set-up time was minimal. There are good transport links and it is conveniently set in a shopping centre so great if any last props need purchasing. I would highly recommend this excellent resource."

- Annie Smol MBE, JaZanne Arts



See what it can do
 - this trailer for our film *Equilibrium* was created by our Broken Silence group using the **Green Screen**.



Annie Smol facilitating a Dreamcatcher Workshop in 2004

Face Front Inclusive Theatre originated from the Inclusive Arts Campaign back in 1998. The campaign was led by a group of disabled and non-disabled artists who were all committed to developing inclusive arts.

Annie Smol and Andrew Mclay, the founder members, then started to experiment with different ways of working in theatre with a variety of artists. They experimented interweaving the visual (physical theatre, movement, film) and the aural (song, sound-scaping, poetry and music) using sign language and audio description as an integral part of the performance. The aim was to give disabled artists the opportunity to develop their skills while creating a new, accessible form of theatre..

The Face Front Inclusive Theatre

project was born, and began to develop disabled artists and create inclusive touring productions and participatory programmes.

In 2004, Annie, along with Jon French, Shirley Mason and Catrin Thomas set up Face Front Inclusive Theatre as a company, and then a charity, with the mission to create original ground-breaking inclusive theatre with disabled and non-disabled artists.

Since then, the company has gone from strength to strength, with major touring programmes going into schools and theatres across London and the UK, and a full participatory programme of disabled young people, adults and intergenerational groups creating their own original plays.

Face Front uses theatre to change lives and improve emotional wellbeing, addressing domestic abuse, transitions, sex and relationships, resilience and inclusion. Diverse. disabled and neurodiverse actors who have had training and first employment with us, have gone on to work with renowned companies across the world.

None of this would have been possible without the hard work and passion of all Face Front's staff, artists, trustees, volunteers and of course participants and audiences.

We greatly look forward to celebrating our 25th year with you!

Theatre in Schools



It's My Move back on tour in 2022

Face Front creates accessible, issue-based theatre closely linked to the needs of schools. We engage and inspire pupils, supporting their social, emotional and creative development and helping them to lead active, healthy and positive lives. This year, we were very excited to return to touring to SEN and primary schools with **It's My Move** and **Whisper Me Happy Ever After**. Online, we continued to promote **Whisper Me Digital** and **It's My Choice** nationally.

IT'S MY MOVE

Co-written by Julie MacNamara, Face Front has created a Theatre and Training programme about the transition of young disabled people moving from school to adult life. Despite the ongoing challenges of Covid, we toured nationally and performed 27 performances to 1,200 young LDD people – and the professionals who work with them – in special schools, colleges and theatre venues. Additionally, our team,

(including five disabled actors from our Act the Part programme) delivered 14 Creative Industry Workshops to 285 emerging artists.

"It's My Move is a lively, engaging and educational piece of theatre. The performers were confident, warm and created a wonderful and welcoming atmosphere. The fact they are similar in age to the audience makes it very relatable, and the subject is key and relevant. The forum theatre and participation elements were great – empowering members of the audience to have their voices heard, help problem solve, take part and have some fun! A really lovely, life affirming piece of theatre."

- Clare Moloney, Create Enfield Manager, Enfield Council

"On behalf of our students, we would like

to thank the entire Face Front team. The performance and workshop were equally informative, energetic and engaging. The feedback from the students and staff has been fantastic, please return soon."

- Phillip Peterson, Assistant Head, Belvue SEN School

WHISPER ME HAPPY EVER AFTER

Written by Julie McNamara, the play explores the way domestic violence affects the mental health of young people aged 9-12. We delivered 31 performances in 24 schools and reached at least 3,635 young people in primary and special schools in Enfield, Haringey, Camden, Barnet & Brent. Responses from pupils and teachers alike continued to demonstrate the urgent need to tackle this issue as over 138 young people and some teachers made disclosures. Thanks to our counsellor, all schools, pupils and our team received support throughout.

"Everyone here thought that this morning was really wonderful: the children were fully engaged, the acting was brilliant and the story was hard-hitting and thought-provoking and relevant."

- Rebecca Lewis, Deputy Headteacher, Highgate Primary School

"The acting was amazing. I will remember that if someone is being abusive, call Childline or ask someone you trust for help."

- Pupil, Argyle Primary School

"Amazing work and so glad children are provided with such a great space to learn and unpack, as well as to safely disclose. We're grateful for our ongoing partnership and super well done! Thank you."

- Sara Harper, Early Intervention and Prevention Service Manager, CYPS

1. Meet the presenters



2. Watch the story



3. Help Yasmin and Aaron



4. Find out how YOU can get help



IT'S MY CHOICE

Co-written by Julie MacNamara, Face Front created an online Theatre and Training programme about the transition of young people with Learning Disabilities/Difficulties (LDD) from school to adult life. This was in partnership with The Cultural Institute at King's College London, The Council of Disabled Children and the following disability arts organisations: Heart n Soul, Action Space, Vital Xposure and Blink Dance Theatre.

The online resource has its own website (www.itsmychoice.org.uk) and has been promoted to all SEN schools in inner and outer London to young LDD people and the professionals who work with them.

"Every aspect of how to make resources as useful as possible when transferring from live to online seems to have been considered by Face Front. The overall standard of

all the resources is incredibly high... Enormous congratulations to all those involved in making such invaluable comprehensive educational content... I would consider this online resource to be an exemplar of best practice in moving from live to online delivery."

- Anna Hoddt and Jean Carter, John Lyon's Charity

"You need to follow your own heart and dreams. You need to feel confident to do what you want to do. It's only your choice, not anyone else's."

- DDM Participant

"Very impressive."

- Barnet & Southgate College

"...fantastic resources ... produced for teachers to use with their students to explore transition to adulthood."

- West Lea School

WHISPER ME DIGITAL

Co-written by Julie MacNamara, Face Front has created an online resource that explores the way domestic violence affects the mental health of young people. It is for audiences aged 9-12. Launched at the Arts Depot in November 2021, this digital resource has been seen nationally by thousands of Disabled young People, SEN teachers and parents / carers.

"It's such an impactful and valuable programme with excellent resources and very clear for teachers to deliver."

- Year 5 Teacher, Fleecefield School

"The film provoked a lot of interest and very thoughtful discussion. The children were incredibly sensitive and very involved throughout. Thank you so much for the resources."

- Paul Baron Thomson, Primrose Hill Primary school

Theatre in the Community



Joyful Jubilee Connections at the Parker Centre, Edmonton

We were pleased to return to real-life delivery or 'blended' sessions post lockdowns. Every week, more than 175 young people and adults took part in our eight community groups. Joining in and leading in theatre games and drama exercises, with support, they created performances based on their own ideas and presented them to the local community. Participation enabled disabled and non-disabled young people and adults, including those from diverse cultural backgrounds, to gain confidence and skills for life.

The projects helped raise awareness around physical and emotional health, enabling participants to express their emotions, develop arts knowledge and techniques, leadership roles and life skills.

Participants also established supportive friendships, thereby reducing isolation and enhancing their quality of life.

INTERACTION

InterACTION Theatre Group is for 30+ people from different age groups, backgrounds and abilities. Members are aged 7-98. Following the success of previous productions (Between the Wi & the Fi, Ponderful People & The Originators), we created a feature film called Mr & Mystery. Devised by the group, directed by Ray Downing and filmed by Nigel Kellaway, the film was premiered to a sell-out audience at the Dugdale Arts Centre. The film continues to be well received on Face Front's YouTube channel with 700+ views. Watch it via the QR Code here.



"It was a joy to watch myself back on screen. My mum loved it, and I still watch it when I'm at home – it's so good to watch it back."

- Disabled participant

DDM

Led by Ray Downing and Lauren Phillips, and supported by Danny Charalambous, Daniel Addae and Trish Smith, the group of 14 young disabled actors launched their short solo films, started working on their Silver and Bronze Arts Awards and devised and performed a new play called Wait... What? which headlined in CLICfest'22.

"DDM is my whole entire legacy – it's my life."

- DDM Participant

"DDM has been a great place for my son to go. He has made many friends, both teachers and students. He has learnt many things by going to Face Front. They are an amazing organisation that help with vulnerable adults, The patience they have with the young people is absolutely amazing, I don't know what I would do without them."

- Parent of DDM participant

BROKEN SILENCE

Our Broken Silence group, run by Jon French and Angie Wallis, is made up of 25+ disabled adults. This year, the group launched their feature musical film, Equilibrium. The action takes place on and around the fictional island of Hanalei, where the group play both humans on the island and sea creatures in the surrounding underwater world.

Filed entirely on Face Front's green screen and premiered at the Lee Valley Odeon Luxe cinema, we are so very proud of this film and will endeavour to find screening opportunities for it both nationally and internationally in the coming years.

"The whole experience was really profound. Not only seeing the commitment and joy on the participants' faces, but also understanding how important it is for this vulnerable community to have this interaction and experience."

- Audience member



DDM participant receiving their Arts Award

BLUE SKY ACTORS

Working with Theatre Royal Stratford East and led by Sarah-Jane Wingrove and a dedicated staff team, the group successfully performed two original productions, Pant-uh-o That Goes Wrong and Untold Stories. In addition to learning performing skills, the groups completed Acting & Work CVs to help them move on to further work, education and training. We were also delighted to have the continued support of patrons Ade Adepitan MBE and Vince Hilaire.

"My sibling had their first Blue Sky Panto Performance in 2022. I've never seen him so dedicated to a performance... I could feel his excitement in the build-up to the performance, he had told nearly

everyone he knew about it.

One of the main admirations of the programme is that it empowers [him] to have something of his own to take ownership of in its entirety and it gave him something to talk about to friends, family, and carers.

Considering my brother has attended for one term only, if it were ever to disappear it would leave a terrible hole in many people's lives, including mine who doesn't even attend!"

- Sister of new Blue Sky Actor

"Such an inspiration to watch everyone doing what they enjoy."

- Shirley, Audience member

THE BRIDGE GROUP

We were incredibly proud to launch our new Bridge Group. The group is open to families and adults of all abilities and experiences and encourages referrals from local partners and social prescriptions. The group is process based and acts as a bridge to other Face Front groups.

"I really think it's fantastic here. I'd wanted to do something like this for a long time.... I've met lots of new people. At first, I wasn't sure and my confidence was a bit low, but now I've been coming and it's been great. Also, I just wanted to add that I'm the only deaf/blind person in the group, but everybody's been making me feel very welcome and I've been able to access everything, which has been really good."

- Deaf/blind participant

Face Front has been working in partnership with JaZanne Arts, supporting them to run arts and reminiscence activities for older people including:

THE DREAM TEAM

A group of 16 diverse independent older people who meet at the Face Front studio. Their most recent project has been to write, produce and perform in a highly original and ambitious sci-fi film about climate change and environmental issues.

"As a recent widow, I am so lonely at home, but these sessions keep me going through the week."

- Dream Team Participant

JOYFUL CONNECTIONS

This project runs two regular sessions at the AgeUK Enfield Parker Centre in Edmonton, for people living with mild to advanced dementia. JaZanne facilitators and Dream Team volunteers, work with 32 older people over the two sessions providing reminiscence, singing, arts and crafts and drama activities.

JaZanne run celebratory events inviting carers and other family members to share in the achievements of the group members and have a quality of life experience together.

"It raises their spirits, you can see the joy on their faces."

- Audience member

AGE-WELL DRAMA GROUP

A group of primarily African-Caribbean older women based in Newham who meet at the Barking Road Community Centre. This group has been working on developing their performance and writing skills with a new play set in a food bank, at Applecart Arts in East London.

"I loved the way we chose a character and developed it."

- Age-Well Participant

Bespoke Projects & Festivals

Face Front has delivered a variety of special projects including:

CULTIVATING CREATIVE CONNECTIONS

Face Front continued to develop networks and partnerships with theatre venues, schools and touring companies in order to engage young disabled and non-disabled people both as audience and participants. We worked with local and national venues aiming to create meaningful relationships and ongoing partnerships.

ELEVATE

With support from Arts Council England, we continued to deliver our Elevate programme with our two part-time posts, Development Manager and Project Coordinator. Elevate enables us to realise our vision of becoming a leader in Inclusive Arts. Our aim remains to be a catalyst for disabled artists and smaller disability/inclusive arts groups and become stronger, by supporting and linking with a range of like-minded venues and larger arts companies.

THE HERO NEXT DOOR

Following a successful research and development phase last year, we are taking this project into a full production in 2023 and will tour nationally into medium-sized theatre venues. Written by patron Onjali Rauf MBE and directed by Annie Smol OBE and Face Front co-founder Jon French, this new production has been created especially for 7–10 year olds and celebrates difference, friendship and working together to do the right thing.

“The play was very funny but with lots of thought-provoking moments. I was particularly impressed with how the girl with autism was portrayed: the actress didn’t rely on lazy stereotypes...”

I found myself getting quite emotional during the grandfather’s speech about refugees and I am sure his experiences will help a lot of children – many of whom are welcoming refugees into their schools in 2023 – understand a bit more about what their new classmates are having to contend with. ... Hope the tour goes well, it really deserves to be a smash”.

- Audience member who attended with 9 year old daughter



DIVERSIFYING THE CURRICULUM

We partnered with Haringey Creates and led a dynamic training session for teachers and practitioners at the Bernie Grant Arts Centre, a local venue.

“Excellent... Provided the space for teachers to learn from artists with experience.”

- Delegate

FEAR SUMMIT

The FEAR Summit programme is a series of off-the-record forums for practitioners to address their professional fears with the overall aim of unpicking, unifying and promoting shared best practice and creative solutions. Summits already delivered included: **The Barriers of the Payment of Freelance Disabled Artists**, and **The Representation of Disability in Modern Mask Work**.

CREATIVE ARTS INDUSTRY WORKSHOPS

Delivered by a team of five disabled and non-disabled facilitators, this workshop was run in conjunction with **It’s My Move** as young disabled people visited their local theatres to promote further training or a career in the Creative Arts Industry. This interactive workshop gave a realistic view of being an actor on tour.



CLICFEST’22

We were very pleased to continue our umbrella festival: Connecting London’s Inclusive Communities. Throughout the summer, we supported 140 events by 41 inclusive communities including Mind The Gap, SAVVY Theatre, ArtsDepot and many, many more!

“Wow - what a success! I am chuffed that your event went so well, it deserved to and was great to be a part of such a brilliant platform.”

- Baked Bean Theatre Company

Diversifying the Curriculum
a training session for creative practitioners



Funders



Brian Murtagh
Charitable Trust



Canal & River Trust
Making life better by water



Supported by
BBC Children in Need
© BBC 2017. All rights reserved. BBC and Children in Need are registered trademarks of the BBC.



David Solomon Trust



The D'Oyly Carte Charitable Trust

EMERGENCE
FOUNDATION



The Hilden Charitable Fund

Haringey
LONDON



JOHN LYON'S CHARITY

L&Q Foundation



LEATHERSELLERS' COMPANY
CHARITABLE FUND

MARSH
Christian Trust



Morris Charitable Trust



COMMUNITY
FUND



Sussex Community Foundation
INSPIRING LOCAL GIVING • MEETING LOCAL NEEDS



Tottenham Grammar
Foundation

We would like to acknowledge donations and income from: Amazon Smile, Anne McGilchrist, Denis Stoller, Haringey Education Partnership, Herts Inclusive Theatre, Jane & Lissa Hermans, JaZaane Arts, Park Avenue Resource Centre, Ripple & Co, Stratford Circus Arts Trust, Theatre Royal Stratford East, Trevor Duke, Will Smith, Anon.

Special thanks to: Ashdown Phillips, Claire Fenwick, Community Links Enfield, Community Links Edmonton, Joe Katona, Hamida Ali, Michael Emanuel, Platinum Performing Arts, Rebecca Bird, Rosemary Mann, Sabri Marsaoui, Shamima Rahman, Staff & year 6 students of St.Edmund's School, Toolbox Marketing, Park Avenue Resource Centre, parents and carers and our unsung supporters.



Our fabulous Broken Silence ensemble!

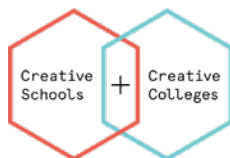
The Future

Face Front has been building on its successes, with inclusive theatre projects for schools, national tours, and increased participation. We will continue to extend its reach and profile both regionally and nationally.

Projects planned over the next three years include:

- Development and expansion of our tours of 'Whisper Me Happy Ever After', 'It's My Move' and 'The Hero Next Door' into new schools and venues nationally.
- Continuing to work with partners, practitioners and academics in order to develop research and work to engage patients and clinicians, specifically social prescription.
- Producing CLICFest annually, as well as FaceFrontFest every two years at the Dugdale Arts Centre and Face Front Studio. This will feature all our Enfield based groups: Broken Silence, The Bridge Group, DDM and Interaction.
- Development and expansion of our digital projects including Whisper Me Digital, It's My Choice and Equilibrium.
- Developing our Training Programmes for: i) Disabled Arts Practitioners through master-classes, work experience, mentoring and placements, ii) Transition Professionals, iii) Corporate sector, iv) Clinicians, and v) Young people with long-term health conditions.

We are members of



Who are Face Front?

PATRONS Aditya Chakraborty, Doris Jiagge, Joseph Adelakun, Josette Bushell-Mingo OBE, Judy Hepburn, Mat Fraser, Onjali Raúf MBE, Rachel Denning.

BOARD OF DIRECTORS Roger Cowe (Chair), Ayo Oyeade (Treasurer), Ray Downing (Company Secretary), Jacquelyn Shreeves-Lee, Meseret Zekai, Catrin Thomas, Sean Langford, Chris King, Leesa Gazi, Mary Fernandes, Suzannah Yianni, Siwan Thomas-Gibson (co-opted Jan'23).

CORE STAFF Jon French (Executive Director, Co-CEO), Ray Downing (Artistic Director, Co-CEO), Annie Smol MBE (Associate Artist), Jacqui Livingston (Associate Producer), Rachel Bradbear (Development Manager), Lauren Phillips (Associate Producer), Sarah-Jane Wingrove (Associate Producer), Liz Adams (Associate Producer), Katherine Bruce (Fundraiser), Emily Wrench (Fundraiser), Eliza Wilson (Associate Producer).

VOLUNTEERS & PLACEMENTS Alex Garfath, Amit Tailor, Angela Hart, Anna McKerrrow, Andrew Bradford, Apria Benmbarek, Danny Charalambous, Daisy Hodges, David Sloan, Debra & David, Demetris Antoniou, Chris King, Claire Hoskin, Ellen Goodey, Frankie Brady, Grace Parsons, Greg Baxter, Hannah Elshaw, James Fuller, Janine Robles, Jane Hermans, Jacquelyn Shreeves-Lee, Jude Habib, Julian Hilaire, June & Troy, Leesa Gazi, Lissa Hermans, Linda Jordan, Lynda Lynn, Lynda Brennan, Mo Cross, Natasha Cox, Oscar Ellis, Patrick McCarthy, Peter Faventi, Ruth Angel, Rebecca Seabrook, Richard Costello, Rose Bramble, Ros West, Ruth Alltimes, Sita Brahmachari, Shanil Tailor, Taj-Levi Matthews, Trevor Duke.

FREELANCERS: CREATIVES, CAST & CREW Angie Wallis, Alex Garfath, Awa Jagne, Briony Dillion, Chris Wood, Chi-Lin Nim, Darl Stenering, Daniel Addae, Danny Charalambous, Darnell Appleton, Emily Bradley, Ellen Goodey, George Freeman, Greg Williams, Gopal Gautam, Grace Firth, Howard Read, Jacquie Livingstone, Jacquelyn Shreeves-Lee, John Fuller, Julie McNamara, Jim Smith, Jessica Konzon, Katie Anna McConnell, Kymarni Appleton, Leon Wonder, Liz Smith, Liz Adams, Lia Weber, Luke Ricketts, Lucy Atkinson, Mayo Trikerioti, Martha Lamotte, Martine Drake, Matthew Ballantyne, Mark Ratcliff, Mehmet Zorba, Molly Richards, Natasha Cox, Natasja Desir, Nigel Kellaway, Onaji Raúf MBE, Paul Barnes, Paul Wild, Penny Gkritzapi, Porl Cooper, Richard Rudnicki, Robin MacDonald, Ros West, Rona Namudu, Russell Dean, Sarah Warner, Sally McNeil, Scotty Watson, Sue Smith, Taj-Levi Matthews, Trish Smith, Theo Holloway, Will Smith, Warren Adams.

PHOTOGRAPHERS Sam Carpenter, Chris Wood, Ray Downing, Sarah-Jane Wingrove, Angela Sharpe.

GRAPHIC DESIGN Nigel Kellaway.

COMPANIES (PARTNERS, ASSOCIATES & SUPPLIERS) Access Arts Awards, Alpha Transport, Access All Areas, Alexandra Palace Theatre, Alpha Transport, Alternative Centre of Education, Arts Depot, Amici Dance Theatre Company, Applecart Arts, Bernie Grant Arts Centre, Blue Box Agency, Blink Dance Theatre, Blue Elephant Theatre, Border Crossings, Camden Council, Carousel, Creative Schools + Creative Colleges, Chickenshed, Community Links Edmonton, Council for Disabled Children, Coreli Dance Company, Creative Minds, Cultural Institute - King's College London, Deafblind UK, Enfield Children and Young Person's Services, Edmonton Community Partnership, Enfield DV Forum, Enfield Joint Services for Disabled Children and Young People, Enfield Adult Services, Enfield Youth Support Service, Enfield Disability Action, Enfield Women's Centre, Enfield Age UK, Enfield Presents, Enfield Council, Fellow Productions, Fleecefield Primary School, Flints Hire & Supply, Finchley Youth Theatre, Graeae Theatre, H&H Van Harlow Playhouse, Harrogate Theatre, Haringey Shed, Hackney Shed, Haringey Council, Haringey Cultural Education Partnership, Handheld Arts, Harlow Playhouse, Harrogate Theatre, Head2Head Sensory Theatre, Heart n Soul, Herts Inclusive Theatre, Ignite Me Theatre, Immediate Theatre, JaZanne Arts, Jellyfish Arts, JOY Festival, Kids, Komola Arts Collective, Little Fish Theatre, Marcus & Mccrimmon Management, Mencap, MIND Enfield, Moonbeam Theatre, National Children's Bureau, Odeon LUX Lee Valley Cinema, Orpheus Centre, One to One, Participatory Arts London, Park Avenue Disability Resource Centre, Platinum Performing Arts, Ponders End Community Trust, Ponders End United Reformed Church, Printsome, R&D Studio Ltd, Razed Roof Theatre, Royce Management, Rose Taylor Centre, Rosehill Press, Ross Motors, River & Canal Trust, SAVVY Theatre, Stars, Stratford Youth Zone, Spare Tyre, Solopress, Travelodge, Theatre Royal Stratford East, Tiger Monkey, Trestle Theatre, Turtle Key Arts, Upsyched, Waterman Arts Centre, Visible People, Vital Xposure.

Face Front Inclusive Theatre is an associate company of Stratford Youth Zone, Dugdale Arts Centre and Forty Hall.





Inclusion Through Theatre

52 Market Square, Edmonton Green, London, N9 0TZ

Tel - 020 8350 3461 | Email - admin@facefront.org | Website - www.facefront.org



@FaceFrontUK



facefronttheatre



Face-Front-Inclusive-Theatre

Patrons: Josette Bushell-Mingo OBE | Aditya Chakraborty | Rachel Denning
Mat Fraser | Judy Hepburn | Doris Jiagge | Onjali Raúf MBE | Joseph Adelakun

Edmonton Green Charity of the Year

We rely entirely on grants and donations to create the original, ground-breaking inclusive theatre that addresses social issues and helps disabled people to find work in the arts.

JustGiving™

www.justgiving.com/facefront



Face Front Inclusive Theatre is a company limited by guarantee
Registered Office: 52 Market Square, Edmonton, London N9 0TZ
Registered in England and Wales No.05154096 - Registered Charity No.1116506