

inclusive theatre

FACE FRONT



Annual Report
2024 - 2025



Castle by The Bridge Group (2024)

Aims and Objectives of Face Front

Face Front Inclusive Theatre creates original, ground-breaking inclusive theatre with a company of disabled, neurodiverse and diverse artists. The company produces professional, entertaining and challenging multi-layered theatre, through its Theatre in Schools, Participation and Training programmes.

Face Front aims to:

Use the arts to improve emotional well-being and address social injustice.

Develop productions that explore social issues, raise awareness and enable people to engage in the process of change.

Provide programmes that enable disadvantaged adults and children to participate in the arts.

Create pathways to employment in the arts for disabled people and those not traditionally involved in the arts.

Chair's Report



Members of the Face Front board

Last year, Face Front celebrated 25 years of inclusive theatre, and we are delighted to be able to report on another exciting year.

Our thought-provoking Theatre in Education school tours have continued to play to schools across North London and indeed further afield.

The 'Whisper Me Happy Ever After' tour (now in its 13th year) played to over 1,000 students receiving fantastic feedback from staff and pupils. Over half of the schools that booked us to perform were new schools, so our audiences are continuing to grow. We are very happy to report that booking has now started for our 2026 tour.

The 'It's My Move' tour lasted for six weeks visiting schools all over the country from Barnet to Brighton. The team gave 27 performances and nine workshops, receiving more wonderful feedback. Our digital package of the show, called 'It's My Choice' continues to be widely utilised in schools across the UK. Another project that we are incredibly proud of.

Our community groups continue to thrive with a growing number of participants attending weekly sessions, in fact we are now inundated with applications and have waiting lists for each of our Act the Part groups.

In our biennial FaceFrontFest, interlinked with our annual CLICfest, we saw some wonderful productions, in particular we wanted to mention the Broken Silence production of 'The Legacy of Le'Gassy Manor'. This was a joyful musical of community heroes saving Le'Gassy Manor from villainous greedy developers. The Broken Silence participants take two years to develop each of their

pieces and Jon French, who very sadly died early last year, had been at the helm of this production working alongside the quite brilliant Sarah-Jane. We know that Jon would have been incredibly proud.

We also saw the story of Quixote, performed by InterACTion, which has participants ranging in age from 13-80 years. The reworking of the story was intertwined with anecdotes and the history of Enfield and the people who live and work here. The performance gave each and every member of the group a platform and the opportunity to shine - and shine they did.

We remain eternally grateful to all our funders, whose generosity and belief in our work allows us to continue creating inclusive theatre with and for our communities.

It has been an honour and a privilege taking on the role of co-chair, and we would both like to take this opportunity, on behalf of the board, to thank all our staff, participants and volunteers for making 2024/25 another brilliant year for us to celebrate.

Catrin Thomas and Chris King

Contents



- 2 Aims and Objectives
- 3 Chair's Report
- 4 Patrons
- 5 Financial Report
- 6 CEO Report
- 7 Volunteer with us
- 8 Looking forward to our 30th anniversary
- 9 We need your help
- 10 Theatre in Education
- 11 Digital Schools
- 12 Theatre in the Community
- 14 Bespoke Projects & Festivals
- 16 Funders
- 17 The Future
- 18 Participants
- 20 Who are Face Front?
- 22 Green Screen and Studio Hire
- 23 We are members of....
- 24 Contact Details and Social Media

giftaid it

Face Front is a registered charity and welcomes donations. If you are a taxpayer, for every pound you give under the Gift Aid scheme, the government will allow us to claim back 25p.

Please do not hesitate to contact us if you can help us in this way, and feel assured that you will be investing in a well-run company that really makes a difference.

Patrons



Josette Bushell-Mingo OBE

“Face Front are amazing. I am a proud patron to a company that creates ambitious, inclusive practice, diverse arts and culture, as well as celebrating community. The breadth of work and the impact by such a small company, across education, inclusion and belonging, training and theatre, is quite simply

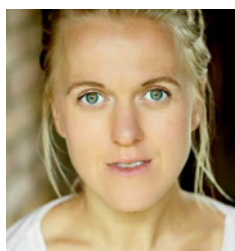
astounding. A company to follow and support.”



Joseph Adelakun

“Being an actor myself, I know the power of what theatre can do, especially when it tackles important topics and is representative of its audience and community - as Face Front so expertly does. Having seen first-hand just how valuable, inclusive and fun their work is, and having already worked with some

of the Face Front family in the past, I'm really looking forward to being a greater part of this amazing company as a Patron!”



Rachel Denning

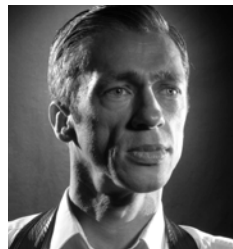
“I was first introduced to Face Front when I worked on Sex FM as an actor and facilitator. I saw how their work can change and sometimes even save lives. I feel that Face Front simply opens its eyes to people (actors and audiences) who are traditionally excluded from the arts and makes them entirely included. Face

Front continues to reach out to young people in the community and further - impacting lives with sensitivity, honesty and fun. I am proud to be their patron and to help spread their work.”



Doris Jagge

A resident of Edmonton for 28 years, she knows the area and its communities well. Her focus on domestic violence and its impact on children aligns with the work Face Front does with our touring show Whisper Me Happy Ever After. She is proud of her association with Face Front and our partnerships with local schools and outreach work.



Mat Fraser

“Theatre has the power to transform the lives of people who make and watch stories unfold on stage. It can radically alter their real lives for the better. When you put those tools in the hands of children who've experienced domestic violence, it can be overwhelmingly powerful and lead to them beating the oppression that keeps them down and finally succeeding in real life. Face Front do this work with passion and have the experience to help these young people help themselves.”



Onjali Raúf MBE

“I joined Face Front's wonderful board group after seeing for myself the impact that their anti-domestic violence play Whisper Me Happy Ever After had upon the children and teachers it was being performed to. It was an honour to serve in my own small way and try to contribute to what I regard as an amazing group's desire

to establish not only a diverse and fully accessible arts platform in every way, but to tackle subject matters which few other arts initiatives dare to take on.”



Aditya Chakraborty

Aditya grew up in Enfield and is a columnist and senior economics commentator at the Guardian newspaper. “I am delighted to be part of this distinguished group of Face Front patrons and look forward to helping this exciting theatre company to continue developing its innovative brand of inclusive theatre.”



Jamie Beddard

“I'm delighted and privileged to be asked to be a Patron of Face Front. My association with the company started 20 years ago, our paths have crossed numerous times since and their brilliant work is as vital as ever. The passing of Co-Founder, Jon French, was a blow to so many, and ensuring the company and his memory continue to thrive is very important to me.”

Face Front Financial Statements

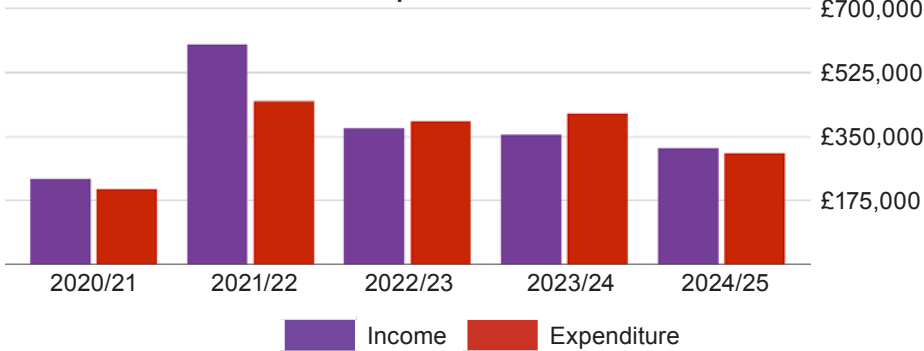
2024-25

The pie charts show that while grants remain the main source of income, we have also raised significant sums from other sources. We also continue to work hard at diversifying the sources of grant income, while the Arts Council England and the National Lottery Community Fund remain important supporters.

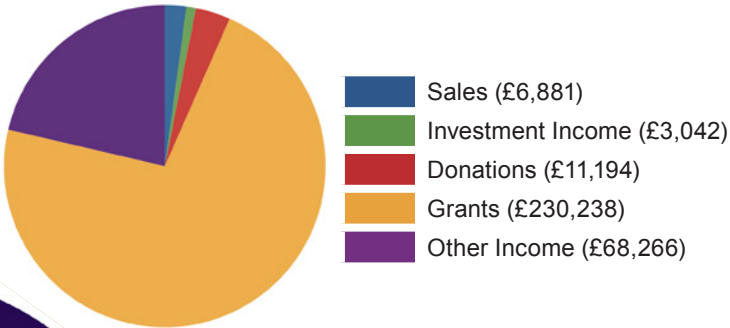
The breakdown of costs demonstrates that much of our income is spent directly on performances and workshops and the small team who create and deliver these performances. We continue to rely on freelancers recruited for specific activities, and many volunteers.

Together with a continuous drive to attract grant support, this approach fits the pattern of Face Front activity and will continue to be a sound financial basis for further development.

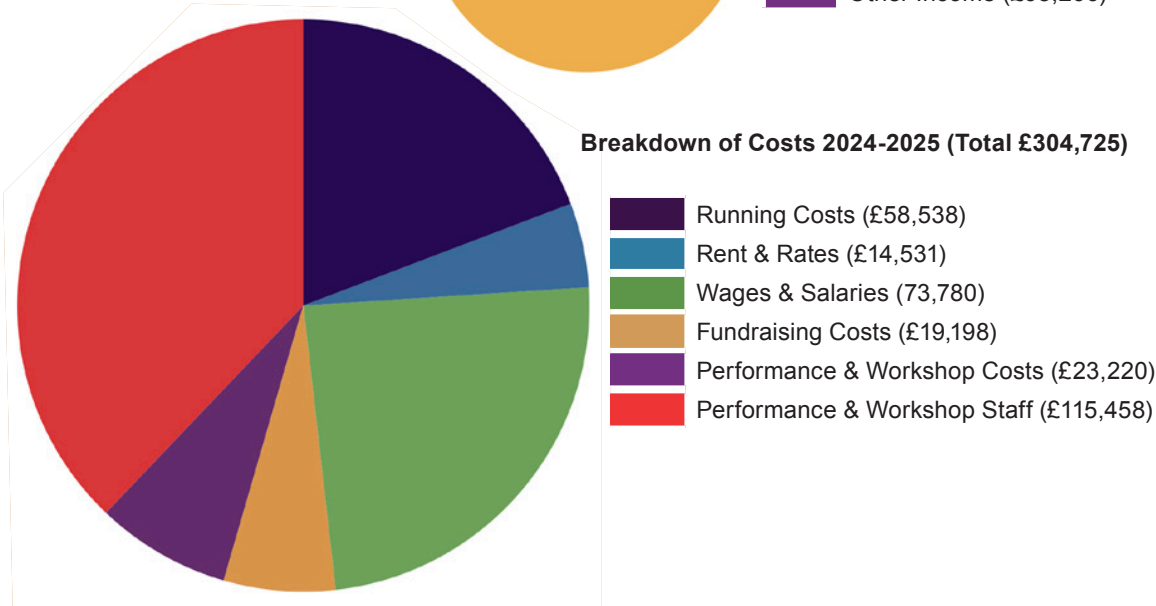
Income and Expenditure 2020-2025



Breakdown of Income 2024-2025 (Total £319,621)



Breakdown of Costs 2024-2025 (Total £304,725)





Face Front Freelancers with patron Joseph Adelakun and CEO Ray Downing

Across 2024, we made the difficult transition to working without Jon French. Jon, the long-time Executive Director of Face Front, died in January, and we continue to feel his absence greatly. One of our trustees and patrons, Judy Hepburn, also passed away in the summer, and again is sorely missed. Now, we continue our groundbreaking inclusive work in their legacy. Despite the sadness of loss, we have also had lots to celebrate in 2024-25, as we

reached Face Front's 27th anniversary. I'm pleased to say that this was a very busy year filled with festivals, new theatre, and some truly incredible performances. I've worked in inclusive theatre for many years, but I'm still always amazed at the power theatre has to reach people and change lives. Please do take some time to read through this Annual Report to find out more about our different projects and productions. Overall, I'm proud to say that,

despite many challenges, we stayed true to our guiding aims throughout the year. We have continued to use the arts to improve wellbeing, to address social injustice and to create pathways to employment for disabled people and those not traditionally involved in the arts. As demonstrated in our newly digitised archive, Face Front's journey over a quarter of a century has been incredible, and we're thrilled to see what the next 25 years will hold! In our new Business Plan,

one of our super-objectives is to explore moving into a permanent venue by 2030 – we greatly hope to see you there! Finally, Face Front is nothing without the support our funders, partners, patrons, trustees and volunteers. In these uncertain times, we're so grateful to have you with us as we all work and play together to lead the way in truly inclusive theatre.

- Ray Downing
CEO

A woman with vibrant blue hair and a large red bow is smiling against a red background. She is wearing a dark blue t-shirt. The bottom of the image has a purple gradient overlay where the text is located.

Volunteer with us

Support ground-breaking
theatre that changes lives

Email: hello@facefront.org

Looking forward to our 30th anniversary

In 2028, it will be Face Front's 30th anniversary – and we're very much looking forward to celebrating with you! Here's a quick reminder of our incredible history...

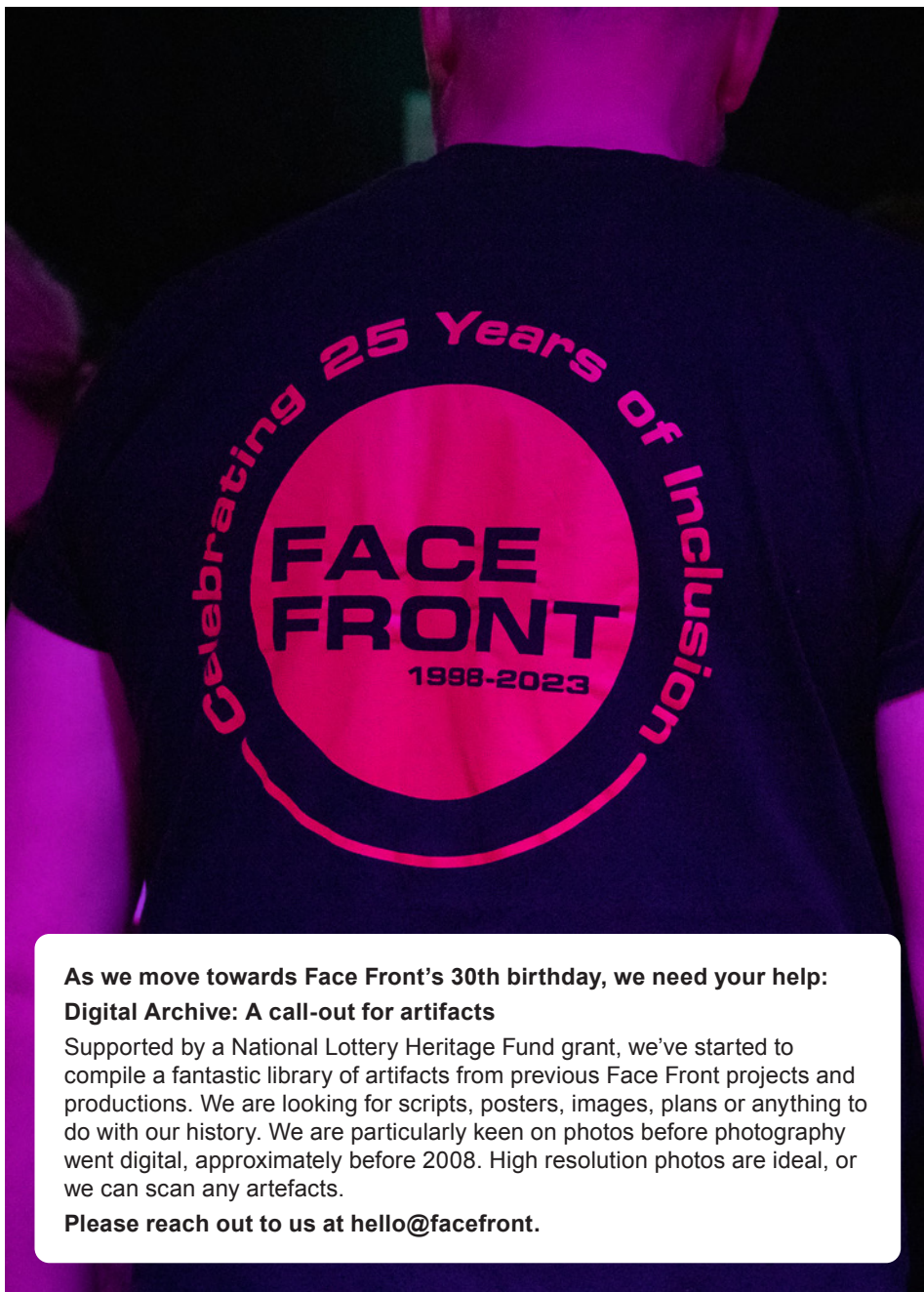
Face Front Inclusive Theatre originated from The Inclusive Arts Campaign back in 1998. This was a group of disabled and non-disabled artists across London, who were all committed to developing inclusive arts.

Annie Smol and Andrew Mclay, the founder members, then started to experiment with different ways of working in theatre with a variety of artists. The aim was for disabled artists to have the opportunity to develop their skills while creating a new, accessible form of theatre.

Face Front Inclusive Theatre was born as a project, and began to develop disabled artists and create inclusive touring productions and participatory programmes. Then in 2004, Annie, along with Jon French, Shirley Mason and Catrin Thomas set up as a company and then a charity, with the mission to create original ground-breaking inclusive theatre with disabled and non-disabled artists.

Face Front has changed lives and improved emotional wellbeing, with theatre addressing domestic abuse, transitions, sex and relationships, resilience and inclusion. Diverse and disabled actors who have had training and first employment with us have gone on to work with renowned companies across the world.

None of this would have been possible without the hard work and passion of all Face Front's staff, artists, trustees, volunteers and of course participants and audiences.



As we move towards Face Front's 30th birthday, we need your help:

Digital Archive: A call-out for artifacts

Supported by a National Lottery Heritage Fund grant, we've started to compile a fantastic library of artifacts from previous Face Front projects and productions. We are looking for scripts, posters, images, plans or anything to do with our history. We are particularly keen on photos before photography went digital, approximately before 2008. High resolution photos are ideal, or we can scan any artefacts.

Please reach out to us at hello@facefront.

We need your help



Operation Scope: A New Home

Responding to the costs of property and the demand for accessible spaces in London, we are looking for a potential new home. We love our studio/office in Edmonton Green but, if possible, we are keen to find a local, permanent and fully accessible venue. So, we're embarking on a mission to find a space we can truly call our own: a venue that reflects our values of community, creativity, and inclusivity.

Our ideal new space includes:

- An office for our staff team
- A workshop studio big enough for our growing participatory groups
- A fully accessible environment to meet the needs of our beneficiaries
- A location still rooted in Enfield, close to our existing base, and accessible by public transport.

This is more than just a re-location, it's an opportunity to redesign Face Front's future. A permanent home means stability for our team, continuity for our programmes, and a welcoming, creative space for our participants and teams.

This is a not a project that we can fulfil immediately, but we're laying the foundations now with the hope that by 2030 we'll be settling into a new home...

If you know of any potential spaces, email hello@facefront.org

Theatre in Education

Face Front creates accessible, issue-based theatre closely linked to the needs of schools. We engage and inspire pupils, supporting their social, emotional and creative development and helping them to lead active, healthy and positive lives.

We were very excited to tour into primary and SEN schools with **It's My Move** and **Whisper Me Happy Ever After**. Also, our Digital Schools projects continue to be very well-received nationally, including, **Whisper Me Digital** and **It's My Choice**.

IT'S MY MOVE

Co-written by Julie McNamara, Face Front has created a theatre and training programme about the transition of young disabled people moving from school to adult life. This year, we're proud to report that we performed 27 shows in SEND schools, colleges, and venues in London and Brighton to 1,177 young people and the professionals who work with them. Additionally, our team, (including five disabled actors from our community groups) delivered eight Creative Industry Workshops to 181 emerging artists. .

"I wanted to say a big thank you again for visiting us with your wonderful performers; the show was amazing and so relevant for our young people. The feedback I have personally had from staff was overwhelmingly positive, so I can confidently say that Face Front made a big impact."

- Darcy Louch, Assistant Head, Kingsley SEN High School

"I was absolutely blown away by the Face Front performance this afternoon... The learners engaged really well and it was a fantastic experience for them. You have a great team of performers, it was pitched really well, great story, loved the sound effects, great interactive elements and



Performing **Whisper Me Happy Ever After**, 2025

of course - the vending machine! We'd like to get you back at some point next year - I'll keep my eye on your website."

- Alex Naidoo, Curriculum Manager, Ambitious about Autism, Ambitious College

WHISPER ME HAPPY EVER AFTER

Written by Julie McNamara, **Whisper Me Happy Ever After** is a production that explores the way domestic abuse affects the mental health of young people aged 9-12. This year, we were very pleased to have delivered the play in 22 schools reaching 1,914 young people in primary schools in Camden, Barnet and Brent. Responses from pupils and teachers alike continued to demonstrate the urgent need to tackle this issue, as over 98 young people made post-show disclosures. Supported by our counsellor, all schools, pupils and our team received support throughout.

"Initially, I had reservations about booking the show given the subject matter of domestic violence. However,

I ultimately decided to proceed, and I wasn't disappointed.

The acting was exceptional, and the performers captured the attention of our pupils, who were genuinely mesmerised by the performance. I was particularly impressed with how sensitively the topic was handled, ensuring that it was both age-appropriate and informative.

It was comforting to witness the positive impact this performance had on our students. Following the show, several pupils, as well as teachers, expressed their gratitude for the opportunity to engage with such an important topic.

Many pupils highlighted that it provided them with the awareness that they have someone to speak to regarding sensitive issues. This feedback confirms to me that I made the right choice by booking the performance. Thank you."

- Ms. Sidhu, Assistant Headteacher for KS2, Downe Manor Primary School



Melody's story from It's My Choice

IT'S MY CHOICE

Co-written by Julie McNamara, Face Front has created an online theatre and training programme about the transition of young people with Learning Disabilities/Difficulties (LDD) from school to adult life. This was in partnership with The Cultural Institute at King's College London, The Council of Disabled Children and the following Disability Arts Organisations: Heart'n'Soul, Action Space, Vital Xposure and Blink Dance Theatre.

The online resource has its own website (www.itsmychoice.org.uk) and has been promoted to all SEND schools and colleges in inner and outer London to young LDD people and the professionals who work with them. Throughout this year, 13 SEND schools have signed up to the project and delivered to over 1,150 disabled young people.

"Every aspect of how to make resources as useful as possible when transferring from live to online seems to have been considered by Face Front. The overall standard of all the resources is incredibly high... Enormous congratulations to all those involved in making such invaluable comprehensive educational content... I would consider this online resource to be an exemplar of best practice in moving from live to online delivery."

- Jean Carter, John Lyon's Charity

"Very impressive."

- Teacher, Barnet & Southgate College

"...fantastic resources ... produced for teachers to use with their students to explore transition to adulthood."

- Teacher, West Lea School

WHISPER ME DIGITAL

Co-written by Julie McNamara, Face Front has created an online resource that explores the way domestic violence affects the mental health of young people. It is for audiences aged 9-12. Whisper Me Digital was originally launched at the Arts Depot in November 2021 and, to date, this digital resource has been seen by 24,393 young people in 20 London boroughs.

"It's such an impactful and valuable programme with excellent resources and very clear for teachers to deliver."

- Year 5 Teacher, Fleecefield School

"The film provoked a lot of interest and very thoughtful discussion. The children were incredibly sensitive and very involved throughout. Thank you so much for the resources."

**- Paul Baron Thomson,
Primrose Hill Primary school**

Theatre in the Community



We were pleased that our eight weekly community groups continued to reach 179 young people and adults. Taking part and leading in theatre games and drama exercises, with support, they create performances based on their own ideas and present them to the local community. Participation has enabled disabled and non-disabled young people and adults, including those from diverse cultural backgrounds, to gain confidence and skills for life.

The projects have helped raise awareness around physical and emotional health, enabling participants to express their emotions, develop arts knowledge and techniques, leadership roles and life skills. Participants have also established supportive friendships, thereby reducing isolation and enhancing their quality of life.

INTERACTION

The InterACTION theatre group is for 30+ people from different age groups, backgrounds and abilities. Members are

aged 13-80. Following the success of previous productions (**Freedom Pass** and **Peter Panto**) and a feature film (**Mr & Mystery**) the group took inspiration from Miguel de Cervantes' classic tale, Don Quixote – reheating, relocating and retelling the story to create a thoroughly modern adaptation.

“Wonderful show, an interesting history lesson but also very clever incorporating Quixote’s wisdom with today’s community and culture. I thought it was saying something about how hard we can find change but also the importance of memories. I always love seeing this group performing together, what a great team.”

- Audience member

DDM

The group of 14 young disabled actors performed a newly devised play called **Plot Twist!** and we are very proud that many achieved their Bronze Arts Awards.

“Our daughter’s confidence has grown massively since she started attending weekly sessions at DDM. She amazed us and her teachers this summer term when she independently decided to audition for a narrator role for her school summer show - she got the part and was truly amazing up on stage. This would never have happened before she started at DDM”

- Parent of DDM participant

BROKEN SILENCE

Following the sad news of co-director Jon French’s passing, the group continued the play he started devising with them. With new group director Sarah-Jane Wingrove and a dedicated team of freelancers, the group created a new play called *The Legacy of Le’Gassy Manor*. Featuring original songs and music, the play was inspired by the themes of legacy and mystery .

“I wanted to write and say how wonderful the performance was. I had no idea what to expect, but was blown away by the quality of the production... I could hear every word, the characters clearly took their acting very seriously, the music was excellent including the singing, which was amazing, and, in the solo parts, really top quality. As I came out, I summed the whole evening up as joyous, just so wonderful to see the joy on the faces of those performing and also the joy in the way they performed. Thank you for all you are doing to make this world a more positive place to live for all those involved, but also for all those, like me, who came to watch.”

- **The Legacy of Le’Gassy Manor**
 Audience member

BLUE SKY ACTORS

Hosted at The Source, supported by the University of East London and Theatre Royal Stratford East, and led by Sarah-Jane Wingrove and a dedicated staff team, Blue Sky Actors successfully performed two original productions: **Christmas Island** and **To Be Continued**. In addition to learning performance skills, the group also continued to regularly train and complete **Acting & Work CVs** to support them into further work, education and/or training.

“It’s amazing for her, very important. BSA gives her whole year structure. It’s important that she’s part of something and they need her. We went to a panto and they asked if they wanted any volunteers and she got up and onto the stage. We were like oh my god that must have been from her drama group. It’s social and encourages her to mix with people and make conversations which she really struggles with.”

- Participant, parent and volunteer

THE BRIDGE GROUP

Following a successful pilot phase, The Bridge Group has proved to be very worthwhile for newcomers to the Face Front family. The group is open to families and adults of all abilities and experiences; we also encourage referrals from local partners and social prescription. The group is process-based and acts as a bridge to other Face Front groups.

Face Front has been working in partnership with **Jazanne Arts**, supporting them to run arts and reminiscence activities for older people including:

JOYFUL CONNECTIONS

This project runs two regular sessions at the AgeUK Enfield Parker Centre in Edmonton, for people living with mild to advanced dementias. Jazanne facilitators



Plot Twist by DDM (2024)

and volunteers work with 33 older people over the two sessions providing reminiscence, singing, arts and crafts and drama activities. Jazanne also run celebratory events inviting carers and other family members to share in the achievements of the group members and have a quality-of-life experience together.

“Being a volunteer is so rewarding. There are no words to explain, it’s opened my eyes. I’m enjoying every minute, just as much as the people we’re helping do.”

- Volunteer

DREAM TEAM

A group of 16 diverse independent older people wrote, produced and performed an original and ambitious sci-fi audio series raising awareness about climate change and environmental issues. They have also devised a new murder mystery.

“It was a fantastic experience doing the recording, I didn’t think I could do it, but you helped me every step of the way”

- Participant

AGE-WELL DRAMA GROUP

A group of 15, primarily African-Caribbean older women, based in Newham who meet in Plaistow. The group wrote a play set in a foodbank that explored the effects of poverty, mental health and othering. It was performed over three nights to 150 people.

“Wonderful show with very talented people who clearly care about the state of this country.”

- Audience member

BRIGHTSIDE DRAMA GROUP

Jazanne ran arts sessions around cooking for 43 participants. A core group of 13 people from Newham then created a beautiful cookery book with stories about the recipes. They launched the book with drama performances and readings from the book to over 135 people.

“Being part of it I was ever so proud – it was lovely to be amongst friends and make new friends.”

- Participant

Bespoke Projects & Festivals



Blue Sky Actors join protest

Face Front has delivered a variety of special projects including:

CELEBRATING JON

In 2024, Face Front's family and friends held a special gathering to celebrate the life and work of co-founder and Executive Director Jon French. For more on his pioneering work in inclusive art, see: Jon French – Drama, Dance & Disability

25 YEARS OF INCLUSION

In October 2024, members of Face Front past and current gathered at Chickenshed Theatre to celebrate our quarter of a century anniversary and launch our digital archive.

GRIEF GATHERINGS

Run by Thrive Dance, this series of workshops brought together people who have experienced grief to explore healing through creative tasks and movement.

"I just wanted to say a HUGE thank you for your support with the Grief

Gatherings. We have truly never worked somewhere that is so full of kindness and generosity and fun. I don't think my words can really express our gratitude. It is very evident what a special place Face Front is and that is because of all you amazing people working so hard and bringing the joy along with it."

**- Sarah Poekert,
Artistic Director, Thrive Dance**

PLACEMENTS

We were proud to have hosted many degree level students from: The Royal Central School of Speech & Drama, Goldsmiths, Chickenshed Theatre and University of East London.

"Over the course of my time with the group, I've learnt so much about inclusive theatre practice. I've got to see first-hand how bringing together different generations through the

arts can really build and strengthen a community. I won't forget all that I've learnt on this placement, and I hope to use this experience to develop and explore inclusive theatre practice. But above all, I won't forget the brilliant people I've had the honour of sharing time (and many a cup of tea) with. Thank you to Ray and everyone at Face Front, and particularly everyone at InterACTION, for letting me be part of the family. I'm sure I'll see you all again soon, till next time!"

**- Tom Chown on placement with
InterACTION**

CULTIVATING CREATIVE CONNECTIONS

Face Front continues to develop networks and partnerships with theatre venues, schools and touring companies in order to engage young disabled and non-disabled people, both as audiences and

participants. We are working with local and national venues, with the aim of creating meaningful relationships.

FEAR SUMMIT

The **FEAR Summit** programme is a series of off-the-record forums for practitioners to address their professional fears with the overall aim of unpicking, unifying and promoting shared best practice and creative solutions. Summits already delivered included: 'The barriers of the payment of freelance disabled artists', and 'The representation of disability in modern mask work'.

CREATIVE ARTS INDUSTRY WORKSHOPS

Delivered by a team of five disabled and non-disabled facilitators, this workshop was run in conjunction with It's My Move, as young disabled people visited their local theatres to promote further training or a career in the Creative Arts Industry. This interactive workshop gave a realistic view of being an actor on tour.

CLICFEST'24

We were very pleased to once again run our umbrella festival, Connecting London's Inclusive Communities. Throughout the summer, we supported 149 events by 34 inclusive communities.

"Face Front have been a really supportive partner organisation who do brilliant work."

- Ellie Short, Creative Participation Manager, Herts Inclusive

AWARDS

Face Front won Most Innovative Proactive Wellbeing Award at The Mental Health Awards 2025.



Remembering Jon at our 25th anniversary event at Chickenshed



Funders



Boris Karloff
Charity



The CHARLES S FRENCH
CHARITABLE
TRUST



Garfield Weston
FOUNDATION



JP Jacobs
Charitable Trust
Est. 1976



JOHN LYON'S CHARITY



MARIA BJÖRNSON
MEMORIAL FUND

MARSH
Christian Trust



Morris Charitable Trust

Musgrave
Family
Charity Trust



The Robert
Gavron
Charitable



Vandervell
Foundation



We would like to acknowledge donations and income from: Anonymous, Annie Smol MBE, Access to Work/DW, Jane & Lissa Hermans, Jazanne Arts, Futsal@Jam, Mary Fernandes, Onjali Rauf & friends/family, Theatre Royal Stratford East, Theatre Tax Relief, Reed in Partnership, Shenanigans Cabaret, Will Smith, West Lea SEN School.

Special thanks to our 25 for 25 doners: Amanda Smith, Anne-Marie Ellis, Andrew Bradford, Anne Ogazi, Carole Wingrove, Chris King, Diane Smith, Emma Atherton-Evans, Jacquelyn Shreeves-Lee, Jane Hermans, Leesa Gazi, Liz Adams, Mary Fernandes, Mo Cross, Paul Wild, Patrick Fuller, Ray Downing, Roger Cowe, Ruth Angel, Sally McNeil, Siwan Thomas-Gibson, Shamama Lanewala, Tina George.

Special thanks to: Ashdown Phillips, Angela Frost, Claire Fenwick, Community Links Enfield, Community Links Edmonton, Kritee Gower, Kyle Blackwood, Hamida Ali, Martin Willis, Michael Emanuel, Penny Skerrett, Peter Cowley, Rosemary Mann, Sarisha Kumar, Shamima Rahman, Park Avenue Resource Centre, Wesley Pemberton, the families, friends, carers and all the other unsung supporters of inclusion.



Celebrating Face Front's 25th Anniversary

Face Front has been building on its successes with inclusive theatre projects for schools, national tours, and increased participation. We will continue to extend our reach and profile both regionally and nationally.

Projects planned over the next three years include:

- Development and expansion of our Theatre in Education tours of **'Whisper Me Happy Ever After'**, **'It's My Move'**, **'The Carbon Footprint Detective Agency'** and a new production about resilience, grief and change.
- Development and expansion of our digital projects including **Whisper Me Digital**, **It's My Choice** and **Equilibrium**.
- Producing our annual **CLICfest** and biannual **FaceFrontFest** at the Dugdale Arts Centre and Face Front Studio. **FaceFrontFest** will feature all our Enfield-based groups and other local artists (any art form), companies and groups.
- Continuing to work with partners, practitioners and academics in order to develop research, and working with clinicians to engage patients via social prescription.
- Finding and fundraising for a permanent accessible venue with office, studio and storage space in or around Edmonton Green.
- Developing our Training Programmes for: i) Disabled Arts Practitioners through master-classes, work experience, mentoring and placements. ii) Transition Professionals iii) Corporate sector, iv) Clinicians and v) Young people with long-term health conditions.

Participants



The Legacy of Le'Gassy Manor by Broken Silence at Dugdale Arts Centre, 2025



We work with hundreds of participants across the community, ensuring every voice is heard, including those of:

Adam, Ade, Adetoun, Alex, Alfie, Ali, Alice, Alison, Allan, Altan, Amba, Amelia, Amelie, Amit, Anna, Anna, Annelise, Andreannou, Araminthe, Arthur, Asim, Awa, Barbara, Barry, Beata, Becky, Belle, Benjamin, Bernadette, Bernice, Buse, China, Chinado, Christina, Christinah, Christine, Christopher, Claire, Conan, Corral, Cristina, Dami, Daniela, Danny, Darren, David, David, David, Debbie, Delia, Demetris, Dora, Eku, Elaine, Elena, Elif, Eliza, Ellen, Elorine, Esther, Ezgi, Faisal, Feliza, Fiona, Frankie, Freddy, Gary, Geesha, Gillian, Gio, Glory, Gordon, Gracie, Graham, Guliane, Hannah, Hannah, Holly, Humphry, Hyacinth, Ilkay, Illeon, Ina, Irene, Ivy, Jacquelyn, James, Jamie, Janet, Jess, Jisha, Jo, Joan, Joe, John, Joseph, Joyce, Joyce, Judie, Kaitlyn, Kasha, Kate, Kathy, Laura, Lauren, Lennon, Letitia, Lissa-Jane, Liz, Lynda, Lydia, Madalin, Manny, Margaret, Mark, Marva, Mary, Mary, Mary, Mary-Anne, Matilda, Maureen, Melina, Meseret, Michael, Michael, Michele, Michelle, Mike, Mo, Mya, Myrtle, Nanna, Nolda, Ola, Pam, Paul, Penelope, Peyton, Phylis, Precious, Rafealla, Raji, Rakhi, Remi, Richard, Rita, Robin, Roman, Ros, Rose, Ruth, Sarah, Shanil, Shannon, Sharon, Sheila, Shona, Sid, Sky, Stuart, Sterre, Stephen, Sylvia, Thomas, Thomas, Trevor, Ursula, Vassos, Vathoulla, Vera, Victor, Vilma, Wendy, Yasmin, Yumi, Zelda, Zoe, Zoe.



Who are Face Front?

PATRONS Aditya Chakraborty, Doris Jiagge, Joseph Adalakun, Josette Bushell-Mingo OBE, Mat Fraser, Onjali Raúf MBE, Rachel Denning, Jamie Beddard.

BOARD OF DIRECTORS Catrin Thomas (Chair), Chris King (Deputy Chair), Ayo Oyebade (Treasurer), Ray Downing (Company Secretary), Roger Cowe, Meseret Zekai, Sean Langford, Leesa Gazi, Mary Fernandes, Siwan Thomas-Gibson, Mevna Bulathsinhala, Jacquelyn Shreeves-Lee (resigned June 2024).

CORE STAFF Ray Downing (Artistic Director & CEO), Sarah-Jane Wingrove (Associate Director), Annie Smol MBE (Associate Artist), Jacqui Livingston (Associate Producer), Katherine Bruce (Associate Producer), Emily Wrench (Associate Producer), Eliza Wilson (Associate Producer), Rachel Bradbear (Development Manager), Chi-Lin Nim (Associate Artist), Greg Baxter (Associate Artist), Grace Firth (Associate Artist), Kymarni Appleton (Associate Artist).

VOLUNTEERS & PLACEMENTS Aglaia Tretiakova, Aidan Slater, Amelie Hodges, Claire Hoskin, Callum Clesham, Danny Charalambous, Daisy Hodges, Demetris Antoniou, Jane Hermans, Julian Hilaire, Mo Cross, Meseret Zekai, Mevna Bulathsinhala, Patrick McCarthy, Peter Faventi, Rebecca Seabrook, Richard Costello, Richard Wang, Shanil Tailor, Sophie Bruno, Tom Chown.

FREELANCERS: CREATIVES, CAST & CREW Adam Smith, Alex Garfath, Alicia Pope, Awa Jagne, Briony Dillon, Christopher Ballam, Daniel Addae, Danny Charalambous, Ellen Goodey, Emily Bradley, George Freeman, Gopal Gautam, Jessica Konzon, Julie McNamara, Katie Anna McConnell, Lucinda Bray, Maxine Dennis, Michaela Waldram-Jones, Molly Richards, Nicky Dune, Natasja Desif, Nigel Kellaway, Patricia Smith, Penny Gkritzapi, Robin MacDonald, Rona Namudu, Sally McNeil, Shirley Mason, Sula Greeson, Taj-Levi Matthews, Theo Holloway.

COMPANIES (PARTNERS, ASSOCIATES & SUPPLIERS) Act Up Newham, Arts Awards, Alpha Transport, Alpha Payroll, Access All Areas, AgeUK Enfield, AgeUK East, Alternative Centre of Education, Amici Dance Theatre Company, Applectart Arts, BKL Accountants, Bernie Grant Arts Centre, Blink Dance Theatre, Border Crossings, Camden Council, Chickenshed, Community Links Enfield, Community Links Edmonton, Cornerstone Café, Council for Disabled Children, Community House, Coreli Dance Company, Creative Minds, Cultural Institute - King's College London, Culture Within Newham, Dugdale Arts Centre, Edmonton Community Partnership, Enfield Children and Young Person's Services, Enfield Caribbean Association, Enfield Cultural Network, Enfield Joint Services for Disabled Children and Young People, Enfield Adult Services, Enfield Disability Action, Enfield Age UK, Enfield Council, Enfield Gazette, Enfield Voluntary Action, yery Fast Signs, Fellow Productions, Fleecefield Primary School, Flints, Forest Gate Community Garden, Haringey Shed, Hackney Shed, Haringey Creates, Heart n Soul, Herts Inclusive Theatre, Immediate Theatre, JaZanne Arts, Jellyfish Arts, JOY Festival, LocalMotion, Makaton Charity, Mencap, MIND Enfield, National Children's Bureau, Northside Youth & Community Connexions, Our Community Cares, Participatory Arts London, Park Avenue Disability Resource Centre, Platinum Performing Arts, Ponders End United Reform Church, Royal Central School of Speech & Drama, Rose Taylor Centre, Rosehill Press, Ross Motors, Simpson Wreford LLP, Stars, Solace Women's Aid, St. Edmunds Primary School, Theatre Royal Stratford East, Unitas Youth Zone, University of East London, Van Den Bussche & Merrill Agency, Visible People.

PHOTOGRAPHERS Nigel Kellaway, Sarah-Jane Wingrove, Ray Downing, Chi-Lin Nim, Musa Bwanali, Hannah Facey.

GRAPHIC DESIGN Nigel Kellaway.

We rely entirely on grants and donations to create the original, ground-breaking inclusive theatre that addresses social issues and helps disabled people to find work in the arts.

JustGiving™

www.justgiving.com/facefront







Green Screen and Studio Hire at Face Front

This incredible resource is now being used across multiple Face Front projects and groups, and is also available for hire. It has one of the largest footprints of any green screen studio in North London.

Hire also includes:

- Fast wifi
- Air conditioning
- Black floor-to-ceiling curtain panels
- Sound system
- Access to our store of blocks, props and costumes
- Kitchen and toilet facilities
- Full disabled access

TECHNICAL SPECIFICATION

Size:

5.4m(w) x 4m(l) x 3.4m(h)

Lighting:

Six ceiling-mounted dimmable 'Anytronics' LED light panels that provide both warm and cool washes controlled by a Zero 88 Juggler DMX panel.

Three portable, floor-standing LED panel SWIT PL-E90D dimmable LED light panels. Additional lights are also available on site.

Hire starts from £300 a day. For a complete price list and to discuss your requirements contact: hello@facefront.org or call 020 8350 3461.

What previous users say about it:

"As a professional video producer of 25 years, it was exciting to discover the brand new green screen studio at Face Front in Edmonton Green... A very flexible creative space suitable for low-budget video productions through to multi-camera broadcast studio productions. At such affordable rates of hire, I would certainly recommend the Edmonton Green Screen studio at Face Front."

- Mark Ratcliff, Fellow Productions

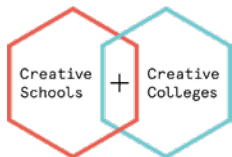


See what it can do - this Equilibrium trailer was created by our Broken Silence group using the Green Screen.



Members of Act the Part Community Groups

We are members of





Inclusion Through Theatre

WINNERS

THE MENTAL HEALTH AWARDS 2025

Most Innovative Proactive Wellbeing Activity

Patrons: Josette Bushell-Mingo OBE | Aditya Chakraborty | Rachel Denning
Mat Fraser | Doris Jiagge | Onjali Raúf MBE | Joseph Adelakun | Jamie Beddard

52 Market Square, Edmonton Green, London, N9 0TZ

Tel - 020 8350 3461 | Email - hello@facefront.org | Website - www.facefront.org



@FaceFrontUK



facefronttheatre



Face-Front-Inclusive-Theatre

Face Front Inclusive Theatre is a company limited by guarantee
Registered in England and Wales No.05154096 - Registered Charity No.1116506